

Road Map



Hybrid Map



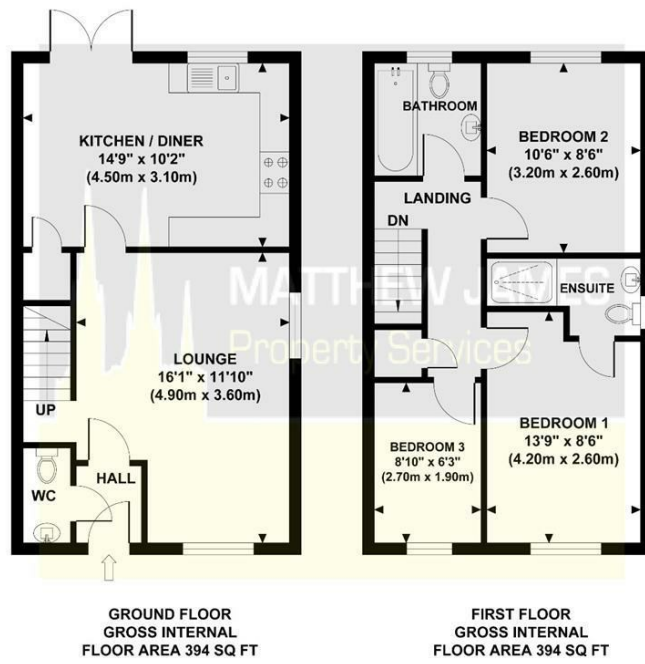
Terrain Map



**MATTHEW JAMES**  
Property Services

Floor Plan

**25 LAPWING PLACE**  
Approximate Gross Internal Area 788 sq ft / 73.10 sq m



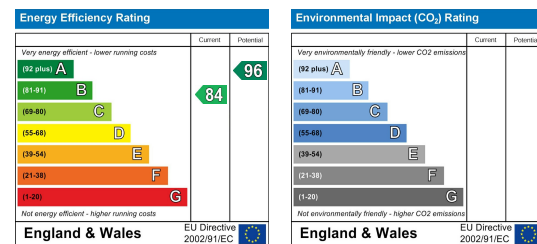
Although every attempt has been made to ensure accuracy, all measurements are approximate and no responsibility is taken for any error, omission, or mid-statement. This floor plan is for illustrative purposes only and not to scale. Measured in accordance to RICS standards.

Viewing

Please contact us on 02477 170170 if you wish to arrange a viewing appointment for this property or require further information.

These particulars, whilst believed to be accurate are set out as a general outline only for guidance and do not constitute any part of an offer or contract. Intending purchasers should not rely on them as statements of representation of fact, but must satisfy themselves by inspection or otherwise as to their accuracy. No person in this firm's employment has the authority to make or give any representation or warranty in respect of the property.

Energy Efficiency Graph



**25 Lapwing Place**

Deram Parke, Coventry CV4 8NE

£320,000



CONTACT INFORMATION

24a Warwick Row, Coventry CV1 1EY

02477 170170

info@matthewjames.uk.com

www.matthewjames.uk.com

Facebook

Twitter

# 25 Lapwing Place

Deram Parke, Coventry CV4 8NE

£320,000



## Approach

Overlooking greenery and woodland with cul-de-sac approach and having small lawned area with paved pathway that leads to the:

## Entrance Hallway

Having doors leading off to:

## WC

Having a low level flush WC, corner wash hand basin, extractor and tiling to all splash prone areas.

## Lounge

16'1 x 11'10

Having a PVCu double glazed window to the front and side elevations, stairs that lead off to the first floor and door leading off to:

## Kitchen / Diner

14'9 x 10'2

Having a PVCu double glazed window and French doors that lead to the rear elevation, a range of wall, base and drawer units with roll top workurface over, upstands, integrated fridge and freezer, integrated washing machine, integrated dishwasher, integrated oven with four ring hob and extractor over, seating area, under stairs storage cupboard.

## First Floor Landing

Having airing cupboard, balustrade, access to the loft area and doors leading off to:

## Bedroom One

13'9 x 8'6

Having a PVCu double glazed window to the front elevation and door leading to the:

## Master En Suite

4'3 x 4'3

Having a PVCu double obscure glazed window to the side elevation, pedestal wash hand basin, low level flush WC, walk-in double shower enclosure, shaving point and tiling to all splash areas.

## Bedroom Two

10'6 x 8'6

Having a PVCu double glazed window to the rear elevation.

## Bedroom Three

8'10 x 6'3

Having a PVCu double glazed window to the front elevation.

## Family Bathroom

6'3 x 5'7

Having a PVCu double obscure glazed window to the rear elevation, panel bath, low level flush WC, pedestal wash hand basin, extractor and tiling to all splash prone areas.

## Rear Garden

Having fenced perimeter, garden shed, paved patio area, and pedestrian gate that leads to the:

## Off Road Parking

Having space for parking two motor vehicles.

